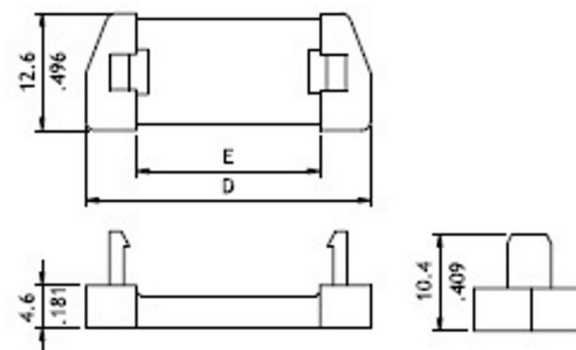


Receptacle connector

Circuits	Dimension				
	A	B	C	D	E
9	25.0(.984)	30.8(1.213)	16.3(.642)	22.4(.882)	12.08(.476)
15	33.3(1.311)	39.2(1.543)	24.6(.969)	30.8(1.213)	19.7(.776)
25	47.1(1.854)	53.1(2.091)	38.3(1.508)	44.5(1.752)	32.4(1.276)
37	63.5(2.500)	69.4(2.732)	54.8(2.157)	61.4(2.417)	47.72(1.879)



Strain relief



RoHS Compliant		<b>SCHMID-M</b>	
APPD.	SCAIF	TOLERANCE XX ± 0.25 XX ± 0.35 ANG. ±	PART NAME D-Sub IDC Connector 9Pin, Female, W/O S/R No Thread
DWG. HELGA	UNIT M M	SIZE. A 4	PART NO. SM C05 0580 09 FDA
DATE 2013/10	PAGE 1 OF 1	REV. C	