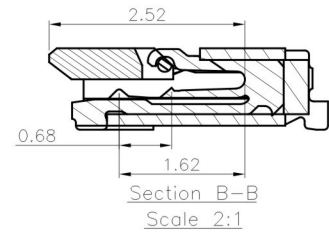
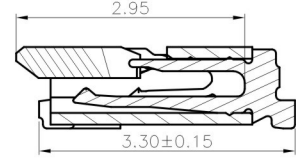
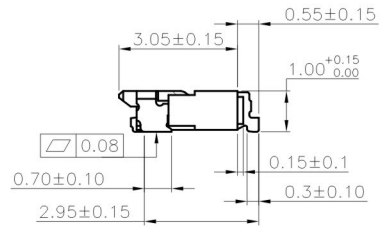
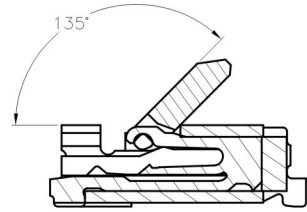
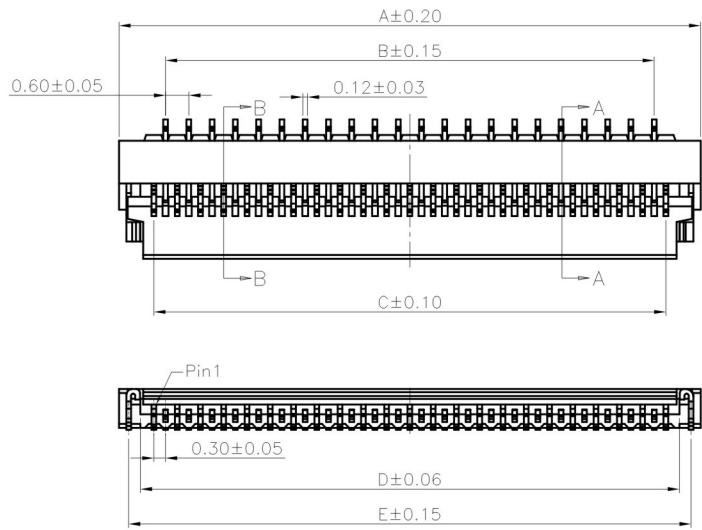
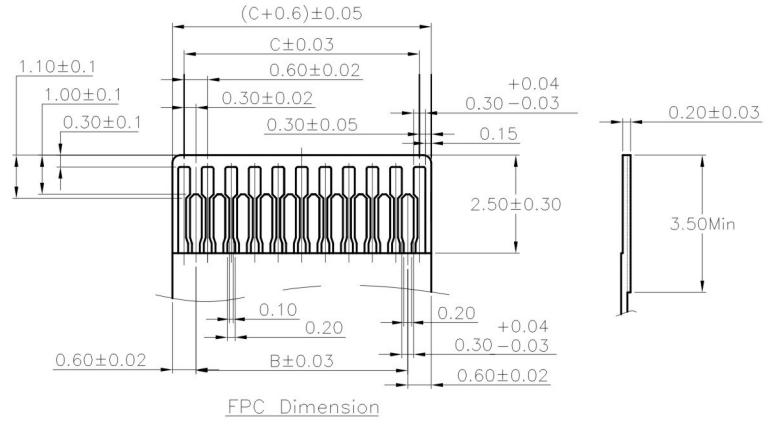


REV.	SPECIFICATION	ECN NO.	APPD.
------	---------------	---------	-------



P.C. Board Layout



FPC Dimension

Material:
Housing: High Temperature Plastic UI94V-0.
Contacts: Copper Alloy.
Solder Pad: Copper Alloy.
Electrical Characteristics:
Current Rating: 0.2 AMP.
Dielectric Withstanding Voltage: 200V AC for 1 minute.
Insulator Resistance: 50MΩ min. at DC 500V.
Contact Resistance: 40mΩ max. at DC 100mA.
Operating Temperature: -55°C~+85°C.
***RoHS Compliant**

Position	Dimension				
	A	B	C	D	E
★ 13	5.40	3.00	3.60	4.30	4.90
15	6.00	3.60	4.20	4.90	5.50
★ 17	6.60	4.20	4.80	5.50	6.10
19	7.20	4.80	5.40	6.10	6.70
★ 21	7.80	5.40	6.00	6.70	7.30
★ 23	8.40	6.00	6.60	7.30	7.90
★ 25	9.00	6.60	7.20	7.90	8.50
★ 27	9.60	7.20	7.80	8.50	9.10
★ 29	10.20	7.80	8.40	9.10	9.70
★ 31	10.80	8.40	9.00	9.70	10.30
★ 33	11.40	9.00	9.60	10.30	10.90
★ 35	12.00	9.60	10.20	10.90	11.50
37	12.60	10.20	10.80	11.50	12.10
★ 39	13.20	10.80	11.40	12.10	12.70
★ 41	13.80	11.40	12.00	12.70	13.30
★ 45	15.00	12.60	13.20	13.90	14.50
49	16.20	13.80	14.40	15.10	15.70
★ 51	16.80	14.40	15.00	15.70	16.30
★ 57	18.60	16.20	16.80	17.50	18.10
★ 61	19.80	17.40	18.00	18.70	19.30
★ 67	21.60	19.20	19.80	20.50	21.10
★ 71	22.80	20.40	21.00	21.70	22.30
★ 73	23.40	21.00	21.60	22.30	22.90

2566 - Series
XX - No. of Pin Count
G - Gold Plated
D - SMD Type
T - Tape & Reel Package

Tolerances X = ±0.25 .XX = ±0.20	Dwg. No.	20150213	
	Date	20150213	
	Unit	mm	Scale 1/N T.S.
	Drawn By		

Title:
2566 Series
FPC Connector
0.3mm Zif Flip Lock Type

SCHMID-M
P/N: SM C06 2566 XX GDT
SHEET 1/1 Ver.No. X2