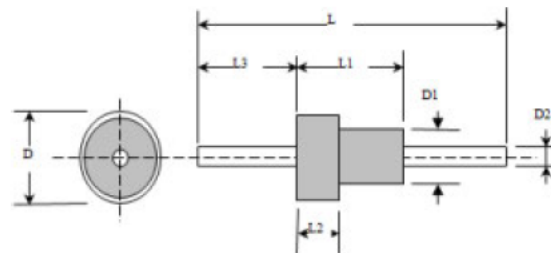


The solder-in feature also allows installation in unison with other board mounted components. Primarily used in filtering signal/data lines and DC power lines.

**Features**

- Small size to allow effective use of space
- Voltage ratings to 750 VDC
- Multiple circuit configurations: C, L & Pi available
- High temperature construction to prevent reflow during installation



Part No.	D	D1	D2	L	L1	L2	L3	Capacitance	Capacitance Tolerance	Rated Voltage	Withstand Voltage	Current	Insulation resistance	Circuit	Temp Characteristics
H1717-001	1.7	1.7	0.5	14.5	2.7	0	5.5	100pF	M	100VDC	300VDC	5A	3000MΩ	C	SL
H1717-002	1.7	1.7	1	28.3	2.7	0	13.5	100pF	M	100VDC	300VDC	10A	3000MΩ	C	SL
JH1915-001	1.9	1.5	0.75	8.7	3	1	3	1000pF	Z	100VDC	300VDC	7A	3000MΩ	C	X7R



Solder Mount Feed-Thru capacitors - Schmid-M

002	2.4	1.6	0.7	30.3	4	1.5	9	100pF	M	100VDC	300VDC	7A	3000MΩ	C	SL
H2416-003	2.4	1.6	0.75	30.3	4	1.5	9	560pF	Z	100VDC	300VDC	7A	3000MΩ	C	Y5P
H2416-004	2.4	1.6	0.7	30.3	4	1.5	9	2200pF	Z	100VDC	300VDC	7A	3000MΩ	C	Y5U
H2416-005	2.4	1.6	0.7	30.3	4	1.5	9	3300pF	Z	50VDC	150VDC	7A	3000MΩ	C	Y5V
H2416-006	2.4	1.6	0.7	30.3	4	1.5	9	15pF	Z	50VDC	150VDC	7A	3000MΩ	C	NPO
H2416-007	2.4	1.6	0.75	30.3	4	1.5	9	1500pF	Z	100VDC	300VDC	7A	3000MΩ	C	X7R
H2416-008	2.4	1.6	0.7	30.3	3	1.1	9	10pF	M	50VDC	150VDC	7A	3000MΩ	C	NPO
H2424-001	2.4	2.4	0.75	22	5	0	9.5	3300pF	Z	100VDC	300VDC	7	3000MΩ	C	X7R
H2424-002	2.4	2.4	0.75	22	5	0	9.5	3300pF	Z	100VDC	300VDC	7	3000MΩ	LC	X7R
H2525-001	2.5	2.5	0.75	28.3	10.3	0	7.5	1000pF*2	Z	100VDC	300VDC	7A	3000MΩ	PI	X7R
H2618-001	2.6	1.8	0.75	30.3	3.5	1	9.5	1000pF	Z	100VDC	300VDC	7A	3000MΩ	C	X7R
H2618-002	2.6	1.8	0.7	30.3	3.5	1	9.5	80pF	Z	100VDC	300VDC	7A	3000MΩ	C	SL
H2618-003	2.6	1.8	0.75	30.3	3.5	1	9.5	470pF	Z	100VDC	300VDC	7A	3000MΩ	C	Y5P
H2618-	2.6	1.8	0.7	30.3	3.5	1	9.5	2200pF	Z	100VDC	300VDC	7A	3000MΩ	C	Y5U

Solder Mount Feed-Thru capacitors - Schmid-M

004																
H2618-005	2.6	1.8	0.75	22	3.5	1	9.5	3300pF	Z		100VDC	300VDC	7A	3000MΩ	C	Y5V
H2618-006	2.6	1.8	0.75	22	3.5	1	9.5	10pF	Z		100VDC	300VDC	7A	3000MΩ	C	NPO
H2618-007	2.6	1.8	0.75	22	3.5	1	9.5	1000pF	Z		100VDC	300VDC	7A	3000MΩ	C	X7R
H2618-007A	2.6	1.8	0.75	22	3.5	1	9.5	1500pF	Z		100VDC	300VDC	7A	3000MΩ	C	X7R
H2618-007B	2.6	1.8	0.75	22	3.5	1	9.5	1000pF	Z		100VDC	300VDC	7A	3000MΩ	C	X7R
H2618-008	2.6	1.8	0.75	6	3.5	1	1	470pF	Z		100VDC	300VDC	7A	3000MΩ	C	Y5P
H2618-009	2.6	1.8	0.7	30.3	3.5	1	9.5	47pF	P		100VDC	300VDC	7A	3000MΩ	C	SL
H2618-010	2.6	1.8	0.5	14.5	3.5	1	5	80pF	Z		100VDC	300VDC	5A	3000MΩ	C	SL
H2618-011	2.6	1.8	0.5	14.5	3.5	1	5	1000pF	Z		100VDC	300VDC	5A	3000MΩ	C	X7R
H2618-012	2.6	1.8	0.7	30.3	3.5	1	9.5	10pF	Z		100VDC	300VDC	7A	3000MΩ	C	NPO
H2618-012A	2.6	1.8	0.7	30.3	3.5	1	9.5	10pF	Z		200VDC	500VDC	7A	3000MΩ	C	NPO
H2618-014	2.6	1.8	0.56	22	3.5	1	10	1500pF	Z		100VDC	300VDC	7A	3000MΩ	C	X7R
H2618-	2.6	1.8	0.56	22	3.5	1	10	1500pF	Z		100VDC	300VDC	7A	3000MΩ	C	X7R

H2618-015	2.6	1.8	0.75	22	3.5	1	9.5	1000pF	Z		100VDC	300VDC	7A	3000MΩ	C	X7R
H2618-017	2.6	1.8	0.75	22	3.5	1	9.5	100pF	Z		100VDC	300VDC	7A	3000MΩ	C	SL
H2618-018	2.6	1.8	0.7	30.3	3.5	1	9.5	50pF	Z		100VDC	300VDC	7A	3000MΩ	C	KL
H2618-019	2.6	1.8	0.75	30.3	3.5	1	9.5	470pF	Z		100VDC	300VDC	7A	3000MΩ	C	Y5P
H2618-020	2.6	1.8	0.75	22	3.5	1	9.5	100pF	Z		100VDC	300VDC	7A	3000MΩ	C	SL
H2618-020A	2.6	1.8	0.75	22	3.5	1	9.5	5pF	Z		100VDC	300VDC	7A	3000MΩ	C	SL
H3022-001	3	2.2	0.7	30.3	3	0.9	10	1pF	1pF-3pF		100VDC	300VDC	7A	3000MΩ	C	
H3822-001	3.8	2.2	0.75	19	4.5	1.5	9.5	1000pF	Z		100VDC	300VDC	7A	3000MΩ	C	X7R
H3822-001A	3.8	2.2	0.75	19	4.5	1.5	9.5	1500pF	K		100VDC	300VDC	7A	3000MΩ	C	X7R
H3822-002	3.8	2.2	0.75	19	4.5	1.5	9.5	80pF	Z		100VDC	300VDC	7A	3000MΩ	C	SL
H3822-003	3.8	2.2	0.75	19	4.5	1.5	9.5	470pF	Z		100VDC	300VDC	7A	3000MΩ	C	Y5P
H3822-004	3.8	2.2	0.75	30.3	4.5	2.5	9.5	2000pF	Z		50VDC	150VDC	7A	3000MΩ	C	Y5U
H3822-005	3.8	2.2	0.75	19	4.5	1.5	9.5	3300pF	Z		100VDC	300VDC	7A	3000MΩ	C	Y5V





Solder Mount Feed-Thru capacitors - Schmid-M

001	4.3	3	1	28.3	2.7	1.2	13	1000pF	M		100VDC	300VDC	10A	3000MΩ	C	X7R
H4330-001A	4.3	3	1	28.3	2.7	1.2	13	1000pF	M		100VDC	300VDC	10A	3000MΩ	C	X7R
H4330-002	4.3	3	1	28.3	2.7	1.2	13	470pF	Z		100VDC	300VDC	10A	3000MΩ	C	Y5P
H4330-003	4.3	3	1	28.3	2.7	1.2	13	330pF	Z		100VDC	300VDC	10A	3000MΩ	C	Y5P
H4532-001	4.5	3.2	0.7	24	6	2.5	10	1000pF	Z		400VDC	800VDC	6	3000MΩ	C	X7R
H4532-001A	4.5	3.2	0.7	24	6	2.5	10	1000pF	Z		50VAC	500VAC	6	3000MΩ	C	X7R
H4532-001B	4.5	3.2	0.7	24	6	2.5	10	1000pF	Z		100VDC	300VDC	6	3000MΩ	C	X7R
H4532-001C	4.5	3.2	0.7	24	6	2.5	10	1000pF	Z		100VAC	500VAC	6	3000MΩ	C	X7R
H4532-001D	4.5	3.2	0.7	24	6	2.5	10	1000pF	Z		500VDC	750VDC	6	3000MΩ	C	X7R
H4532-004	4.5	3.2	1	28.3	6	2.1	12	1000pF	Z		100VAC	500VAC	10	3000MΩ	C	X7R
H4532-004A	4.5	3.2	1	28.3	6	2.1	12	1000pF	Z		220VAC	500VAC	10	3000MΩ	C	X7R
H4532-007	4.5	3.1	1.2	35	5.6	2.1	14	1000pF	Z		250VAC	650VAC	15	3000MΩ	C	X7R
H4532-008	4.5	3.2	0.75	57	6	2.1	22	2200pF	Z		400VDC	800VDC	7	3000MΩ	C	X7R
H4722-	4.7	2.2	0.8	22	3.2	1	12	1000pF	Z		100VDC	300VDC	7	3000MΩ	C	X7R



001																
H4722-001B	4.7	2.2	0.8	22	3.2	1	12	820pF	Z	100VDC	300VDC	7	3000MΩ	C	X7R	
H4722-002	4.7	2.2	0.75	22	3.2	1	12	1000pF	Z	100VDC	300VDC	7	3000MΩ	C	X7R	
H4722-002A	4.7	2.2	0.75	22	3.2	1	12	1000pF	Z	200VDC	500VDC	7	3000MΩ	C	X7R	
H4722-002B	4.7	2.2	0.75	22	3.2	1	12	1000pF	Z	100VDC	300VDC	7	3000MΩ	C	X7R	
H4722-003	4.7	2.2	0.75	22	3.2	1	12	3300pF	Z	100VDC	300VDC	7	3000MΩ	C	Y5V	
H4722-004	4.7	2.2	1	28.3	4	1.5	13	2200pF	Z	100VDC	300VDC	10	3000MΩ	C	X7R	
H4722-005	4.7	2.2	0.75	22	3.2	1	12	100pF	Z	100VDC	300VDC	7	3000MΩ	C	SL	
H4722-006	4.7	2.2	0.7	22	3.2	1	12	4700pF	Z	100VDC	300VDC	7	3000MΩ	C	Y5V	
H4722-007	4.7	2.2	0.7	30.3	3.2	1	9.5	4700pF	Z	100VDC	300VDC	7	3000MΩ	C	Y5V	
H4722-008	4.7	2.2	0.7	24	3.2	1	10	1000pF	Z	100VDC	300VDC	7	3000MΩ	C	X7R	
H4722-008A	4.7	2.2	0.7	24	3.2	1	10	1000pF	Z	100VDC	300VDC	7	3000MΩ	C	X7R	
H4722-009	4.7	2.2	0.75	22	3.2	1	12	2200pF	Z	100VDC	300VDC	7	3000MΩ	C	Y5V	
H4722-010	4.7	2.2	0.75	22	3.2	1	12	1000pF	Z	100VDC	300VDC	7	3000MΩ	C	X7R	

## Solder Mount Feed-Thru capacitors - Schmid-M

H4722-011	4.7	2.2	0.75	30.3	3.2	1	9.5	1000pF	Z		100VDC	300VDC	7	3000MΩ	C	X7R
H4722-011A	4.7	2.2	0.75	30.3	3.2	1	9.5	1000pF	Z		100VDC	300VDC	7	3000MΩ	C	X7R
H4722-012	4.7	2.2	0.7	24	3.2	1	12	4700pF	Z		100VDC	300VDC	7	3000MΩ	C	Y5V
H4722-013	4.7	2.2	0.75	22	3.2	1	12	1000pF	Z		100VDC	300VDC	7	3000MΩ	C	X7R
H4737-001	4.7	3.7	1.5	35	6.5	2.1	12	1000pF	Z		100VAC	500VAC	20	3000MΩ	C	X7R
H4737-002	4.7	3.7	1.5	35	6.5	2.1	12	4700pF	Z		100VDC	300VDC	20	3000MΩ	C	Y5V
H5034-001	5	3.4	1.5	35	4	1.5	13	4700pF	Z		100VDC	300VDC	20	3000MΩ	C	Y5V
H5038-001	5	3.8	0.75	30.3	4.1	2	9	1000pF	M		100VDC	300VDC	7	3000MΩ	C	X7R
H5122-001	5.1	2.2	0.8	28.3	4.5	1.5	12.5	2000pF	Z		50VDC	150VDC	7	3000MΩ	C	X7R
H5122-002	5.1	2.2	0.8	28.3	6	2.5	11.5	3300pF	Z		200VDC	600VDC	7	3000MΩ	C	X7R
H5122-003	5.1	2.2	1	28.3	4.5	1.5	12.5	2000pF	Z		50VDC	150VDC	10	3000MΩ	C	X7R
H5122-004	5.1	2.2	1	28.3	6	2.5	11.5	0.01uF	Z		100VDC	300VDC	10	3000MΩ	C	Y5V
H5122-005	5.1	2.2	1	28.3	6	2.5	11.5	3300pF	Z		100VDC	300VDC	10	3000MΩ	C	X7R

H5124-001	5.1	2.4	1	28.3	6	1.5	12.5	3300pF	Z	100VDC	300VDC	10	3000MΩ	C	X7R
-----------	-----	-----	---	------	---	-----	------	--------	---	--------	--------	----	--------	---	-----

[MORE SPEC. INQUIRE ENGINEERS DIRECT](#)

**SCHMID-M**