

1

2

3

4

5

6

7

8

A

B

C

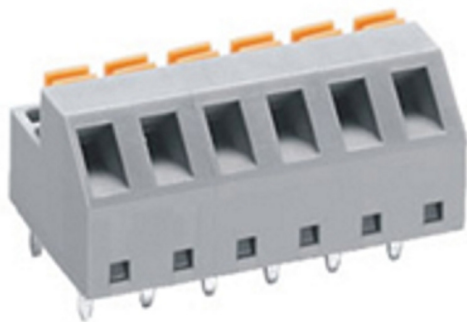
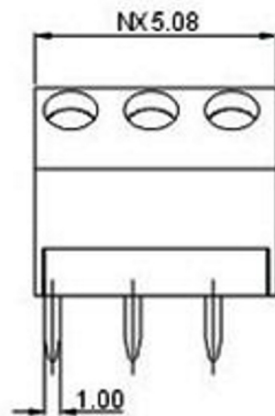
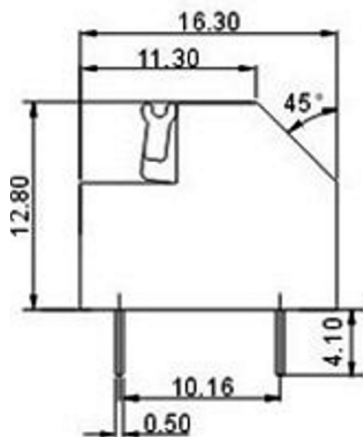
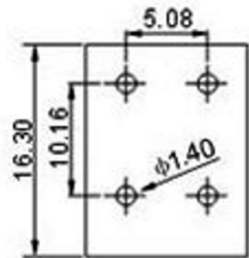
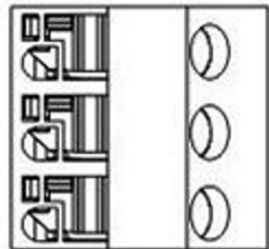
D

E

F

G

H



Standard	UL	IEC
Rated voltage	300V	250V
Rated current	10A	15A
Wire range	22-18AWG	0.2-1.5mm ²
Withstanding voltage	AC2000V/1Min	
Ambient temperature	-40°C~+105°C	
Strip length	10mm	
Pitch	5.08mm(.100")	
Poles	1P-XXP	
Housing	PA66+5%GF.,UL94V-0	
Pin header	Brass, Tin plated	
Wire guard	Stainless steel	

A

B

C

D

E

F

G

H

1

2

3

4

5

6

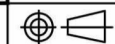
7

8

RoHS
Compliant

SCHMID-M

APPD.



SCALE

TOLERANCE

.0 ±

.00 ±

ANG. ±

SIZE.

A 4

DWG.

GRAY

UNIT

M M

DATE

2014/01/28

PAGE

1 OF 1

REV.

A

PART NAME

Terminal Block, Spring Style,
Pitch 5,08mm, PCB 45°Angle,
XX..... Nr. Pins

PART NO.

SM C09 3586 XX VC1