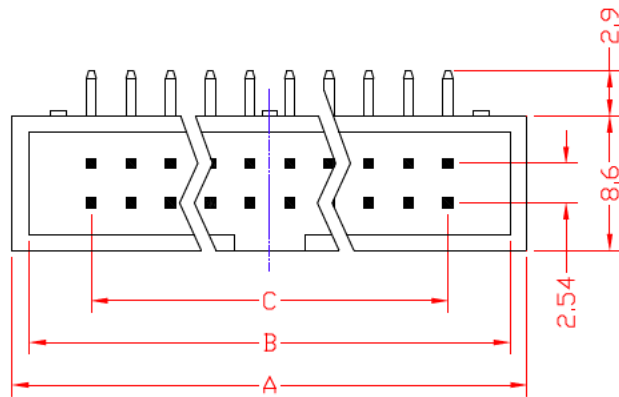
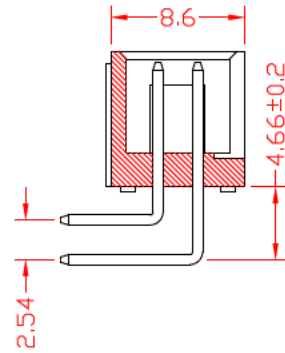
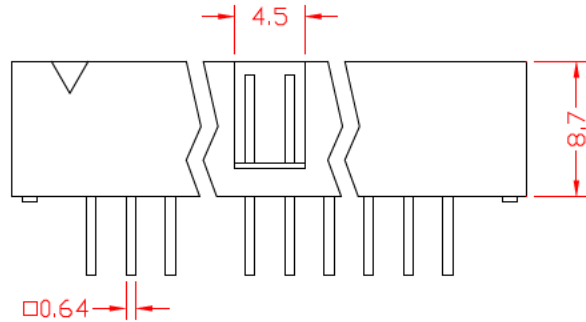


REV.	DESCRIPTION	DRAWN	CHECKED	APPROVED
A	NEW RELEASE		~	



**Specifications:**

Contact Resistance: 30mΩ max.at DC 100 mA  
 Insulator Resistance: 1000MΩmin.at DC 500V  
 Current Rating: 1AMP

**Dielectric Withstanding**

Voltage: AC 1000V For 1 minute  
 Operating Temperature: -55°C- +105°C  
 Contact: Brass  
 Housing: PBT &30% Glass Fiber (UL 94V-0)  
 XX. = No. Poles

Position	A	B	C
10	20.30	18.10	10.16
12	22.84	20.64	12.70
14	25.38	23.18	15.24
16	27.92	25.72	17.78
20	33.00	30.80	22.86
26	40.62	38.42	30.48
30	45.70	43.50	35.56
34	50.78	48.58	40.64
40	58.40	56.20	48.26
50	71.10	68.90	60.96
60	83.80	81.60	73.66
64	88.88	86.68	78.74

GENERAL TOLERANCE		ANGLE TOLERANCE		PROJECTION		TITLE	SM C02 3510 XX R
X.	±15	X.	±3'	UNITS	mm		
.X	±10	.X	±2'	SHEET SIZE	A4	SERIES	2.54mm Right Angle Box Header
.XX	±5	.XX	±1'				
DRAWING TYPE		CUSTOMER					
SCALE	1:1	SHEET	1 OF 1				
DRAWING NO.							