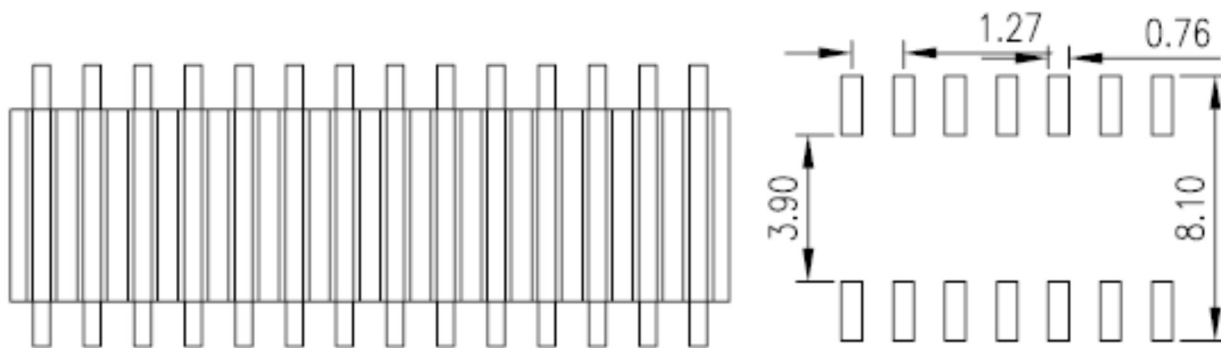


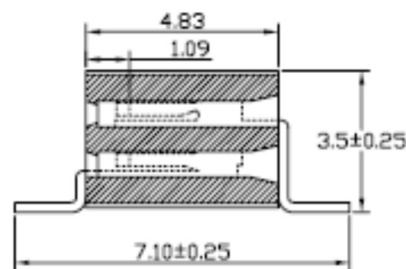
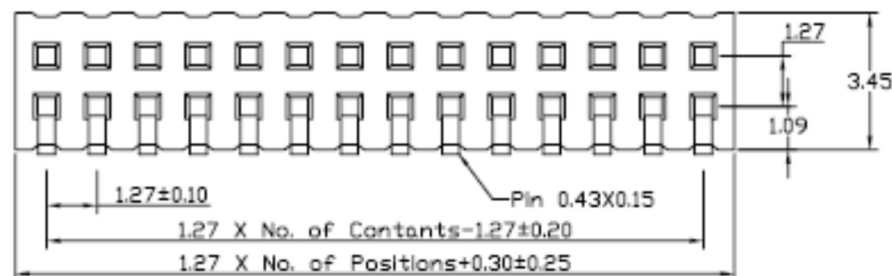
REV.	LOCAS.	DESCRIPTION	DATE	DRAWN
01				



Insulation Resistance: 1000M Min.
 Dielectric Withstanding: 300V AC
 crnc: 20m MaxΩ
 Operating Temperature: -40°C to +105°C

Materials

Insulation Material: Polyester, UL 94V-0



SCHMID-M

REV.	UNIT.	SCALE.	PAGE.
01	mm	3:1	1/1

GENERAL TOLERANCE

X. ± 5°	X. ± 0.30
.X ± 2°	.X ± 0.20
.XX ± 1°	.XX ± 0.15
.XXX ± 0.5°	.XXX ± 0.10

DESIGN:

CHECKED:

AUDITED:

APPROVED:

DATE:

DATE:

DATE:

DATE:

DWG. NO.

PART NO.

SM C02 4835 XX BD

TITLE.

1.27 FEMALE HEADER
 SINGLE ROW DIP/R TYPE
 BASE 3.45H