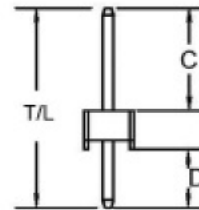
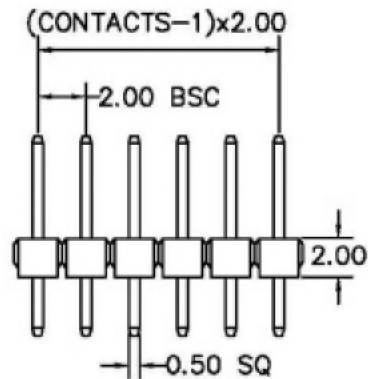


RECOMMENDED P.C.B LAYOUT



T/L= 8.7 mm C= 3.9 mm D= 2.8 mm

CONTACTS	1X21
1X2	1X22
1X3	1X23
1X4	1X24
1X5	1X25
1X6	1X26
1X7	1X27
1X8	1X28
1X9	1X29
1X10	1X30
1X11	1X31
1X12	1X32
1X13	1X33
1X14	1X34
1X15	1X35
1X16	1X36
1X17	1X37
1X18	1X38
1X19	1X39
1X20	1X40

MATERIAL

HOUSING : THERMOPLASTIC UL94V-0
CONTACT : COPPER ALLOYS

SPECIFICATION

CURRENT: 1A
OPERATING TEMPERATURE: -55°C TO +105°C
CONTACT RESISTANCE : 20 MILLIOHMS MAX
INSULATION RESISTANCE : 5000 MEGAOHMS MIN
DIELECTRIC STRENGTH : 1000 VAC MIN

RoHS
Compliant

SCHMID-M

APPRO.		TOLERANCE	PART NAME 2.0mm PIN HEADER SINGLE ROW 1XXXP STRAIGHT TYPE H=2.0mm (C=3.9mm D=2.8mm) ROHS
DWG.		.0=±0.38 .00=±0.25 ANG=±5°	
DATE	UNIT	MM	REV.
2012/08/29	PAGE	1 OF 1	A 4 B
			PART NO. SM C02 6100 XX AS