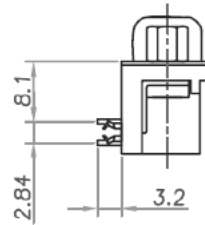
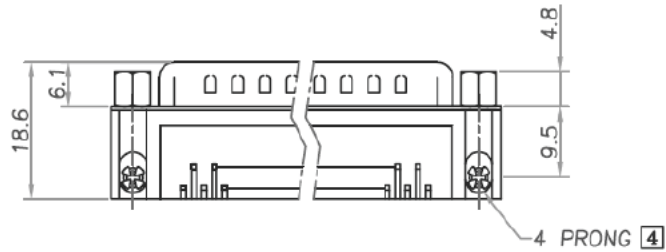
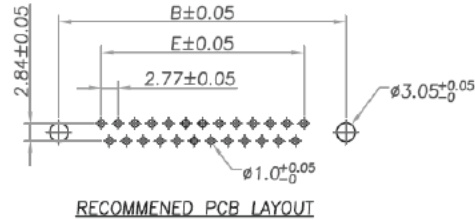
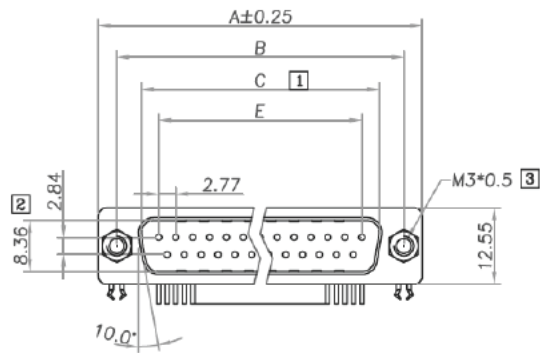


RoHS COMPLIANT



**Material & Finish**

**SHELL:**

Steel, Nickel Plated

**PIN CONTACT:**

Brass

Gold Flash Plated

**INSULATOR:**

PBT & Glass-fibre reinforced  
UL-94-V0 Black

**CLINCH NUT:**

Copper Alloy, Nickel Plated

**Board Lock:**

Brass, Tin Plated

**CURRENT RATING:**

3 Amp

**CONTACT RESISTANCE:**

20mΩ Max

**DIELECTRIC STRENGTH:**

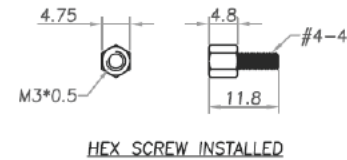
1000VAC for one minute

**INSULATOR RESISTANCE:**

1000MΩ Min. (at 500VDC)

Dimensions				
Positions	A	B	C	E
9	30.81	24.99	16.92	11.08
15	39.20	33.30	25.25	19.39
25	53.05	47.04	38.96	33.24
37	69.40	63.50	55.42	49.86

7.2mm Footprint



DIMENSIONS ARE IN MILLIMETERS TOLERANCE				<b>SCHMID-M</b>	
0.	±0.40	ANGLE ±3°	SCALE	5:1	
0.0	±0.30		REV	A-1	
0.00	±0.20		TITLE D-SUB PCB MALE R/A TYPE 4 PRONG Z SHAPE, LOCK M3 HEX SCREW		
DRAWN	Brown	DATE	19.10.18		
APPROVAL	Walter	DATE			
			DRAWING NO	SM C05 3167 XX M	
			FILE NO		