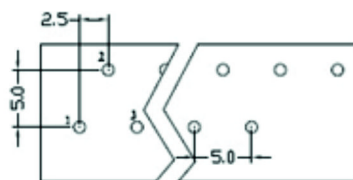
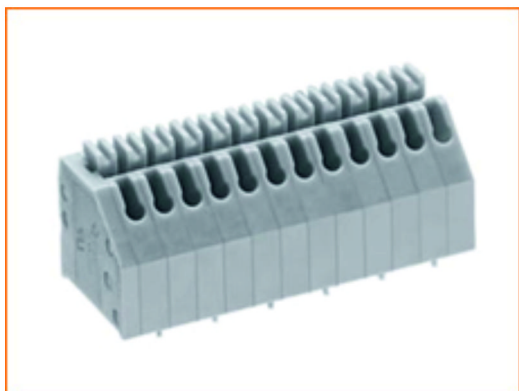


PCB B Type



PCB A Type

View from the bottom / PCB side



Standard	UL	IEC
Rated voltage	300V	250V
Rated current	2A	2A
Wire range	24-20AWG	0.25-0.5 mm <sup>2</sup>
Withstanding voltage	AC2000V/1Min	
Ambient temperature	(-)40°C ~ +105°C	
Strip length	8.5-9.5mm	
Pitch	2.50/5.00mm(.100'')	
Poles	1P-XXP	
Housing	PA66+5%GF.,UL94V-0	
Pin header	Brass, Tin plated	
Wire guard	Stainless steel	

XX..... Nr. Pins  
Y..... A (PCB Typ A); B (PCB Typ B)

RoHS  
Compliant

**SCHMID-M**

APPD.		TOLERANCE	PART NAME
DWG.		0 ±	
DATE	SCALE	.00 ±	PART NO.
2014/01/27	UNIT	ANG. ±	
	M M	SIZE.	
	PAGE	A 4	
	1 OF 1	REV.	
		A	